

Good Jobs—Meaningful Work are part of Ecological & Cultural Sustainability



by
Herb Hammond

Phone: 250-226-7222

Fax: 250-226-7446

hhammond@netidea.com

www.silvafor.org











Water Conservation
Carbon Sequestration & Storage





If human kind continues to approach its problems from the perspective of temporary expediency, future generations will face tremendous difficulties.

Dalai Lama



Good Jobs = Meaningful Work



- **Have purpose**
- **Feed meaning of life**
- **Benefit greater good**
- **Influenced by culture**
- **Able to alter tasks**
- **Able to associate with compatible people & ideas**

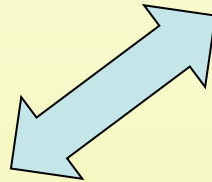


Good Jobs Foundation—Values

EARTH-CENTRED

Holistic

Precautionary



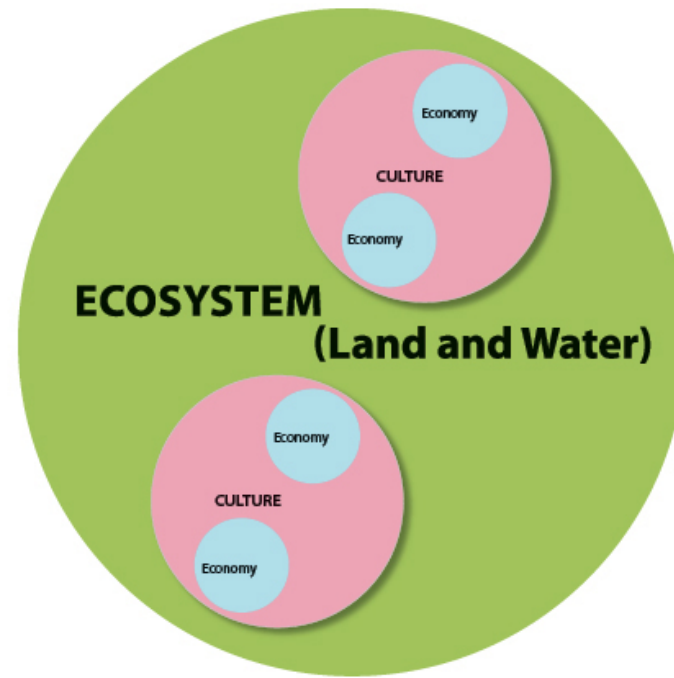
Within Ecological Limits

**Good Jobs
Foundation**



**Hierarchical
Relationship**

**AN ECOSYSTEM-BASED CONSERVATION PLAN IS
BASED UPON A HIERARCHIAL RELATIONSHIP**



Economies are part of human cultures, which are part of ecosystems. Therefore, maintaining the integrity of ecosystems provides the basis for sustainable cultures, including their economies.

Planning Good Jobs

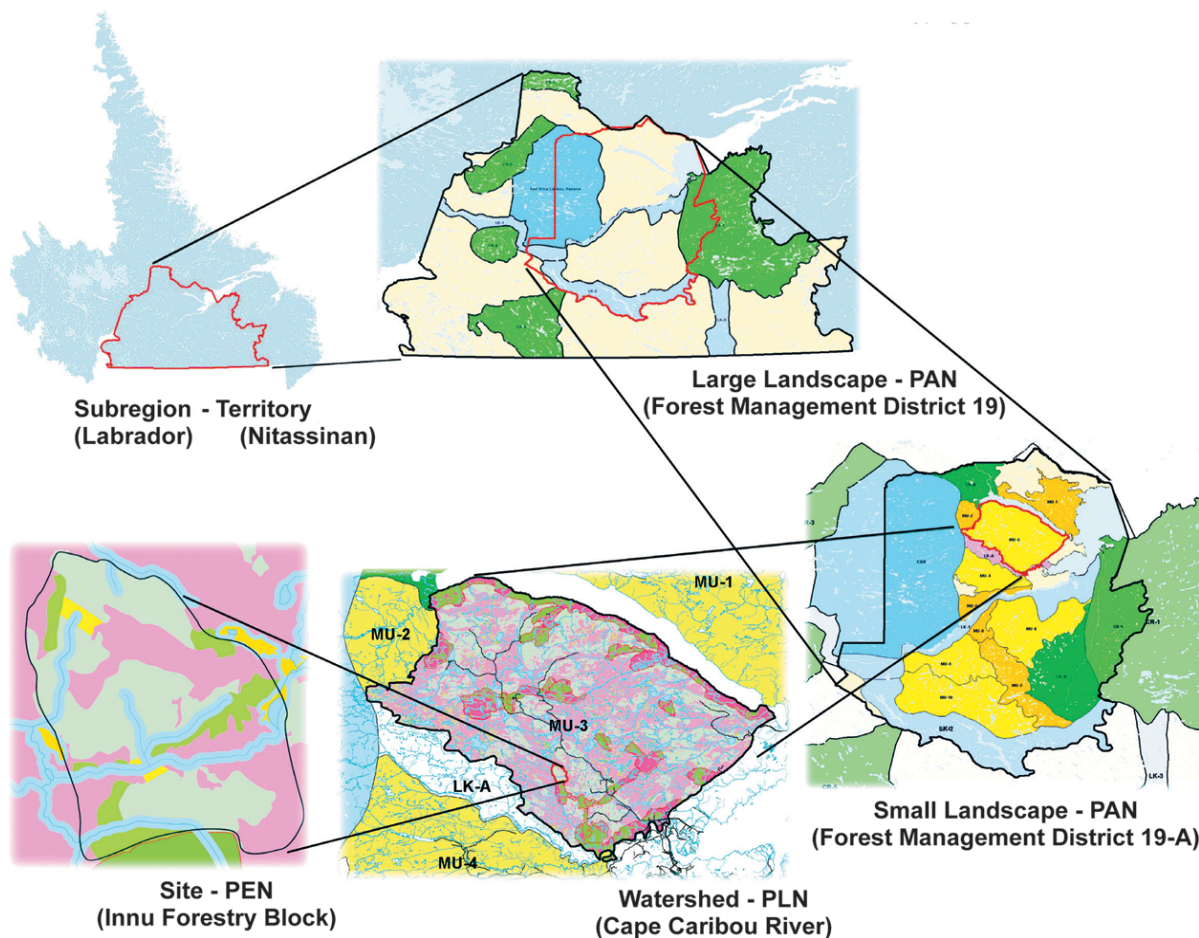


Ecosystem-based Conservation Planning



Multiple-spatial Scale Ecological Reserves

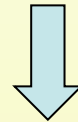
**EBCP--MULTIPLE SPATIAL SCALE ECOLOGICAL RESERVES
Innu Nation Example**



Focus on what to protect then on what to use

Good Jobs—Policy Suggestions Ecosystem-based Conservation Planning

- **Develop *EBCPs*:** -Maintain/Restore ecological integrity
-Define human use areas



Foundation for sustainable community economies ↔ global economy

- **Develop & Implement *EBCPs* through socially responsible government agencies at regional & local levels**

Still Creek Watershed Restoration

Urban landscape

Renfrew Ravine—major anchor

The Watershed

Renfrew
Ravine

Ecosystems work better than pipes!

Image © 2012 DigitalGlobe
Image © 2012 McEhlanney
Image © 2012 Province of British Columbia
Image City of Surrey

Google earth

Good Jobs—Policy Suggestions Urban Ecosystem Restoration

- Develop *socio-ecological economic analysis* to compare ecosystem-based versus engineering-based water management
- Provide *property tax benefits*:
 - ecological restoration
 - conservation covenants
- Restore *ecological integrity in Parks*
- Establish new *Protected Areas & Linkages*



Forest Restoration

Lost opportunities...

contribute to climate change

***Natural ecosystems work better than clear cuts
& tree plantations***

Good Jobs—Policy Suggestions Forest Restoration

- Implement *stumpage surcharge* for clearcutting—covers restoration \$
- Implement *restoration levy* in all stumpage determinations
- Dedicate *portion of carbon tax* to forest restoration
- Develop *ecosystem-based restoration plans* for all BC landscapes—local employment priority
- Require socially responsible, *ecosystem-based forestry*—end future restoration needs/mitigate climate change

Value-added Wood Products Manufacturing Harrop Procter Forest Products

A photograph of a wood processing facility. The scene is set in a large, open-sided structure with a metal roof. In the foreground, there are stacks of light-colored wood planks. In the middle ground, a large orange machine labeled 'TWIN BLADE EDGER' is visible, with a conveyor belt leading to it. To the right, another orange machine is partially visible, with a person standing nearby. The background shows more machinery and stacks of wood. The overall atmosphere is industrial and focused on wood processing.

Capturing Jobs—Capturing Value

Good Jobs—Opportunities

Ecosystem-based Forestry & Value-added Wood Products

- **Clearcutting & milling: approx. 0.85 jobs/1,000 m³ timber**
(25 truck loads of logs)
- **Partial cutting forestry & value added milling: 4 to 5 + jobs/1,000 m³ timber**

Easy but getting Harder

Key: Who Controls the Forests

Potential to reduce annual cut 75%-80% and produce more jobs

- **Mitigates climate change**
- **Healthier, more resilient ecosystems**
- **Diversify & stabilize economy**

Good Jobs—Policy Suggestions

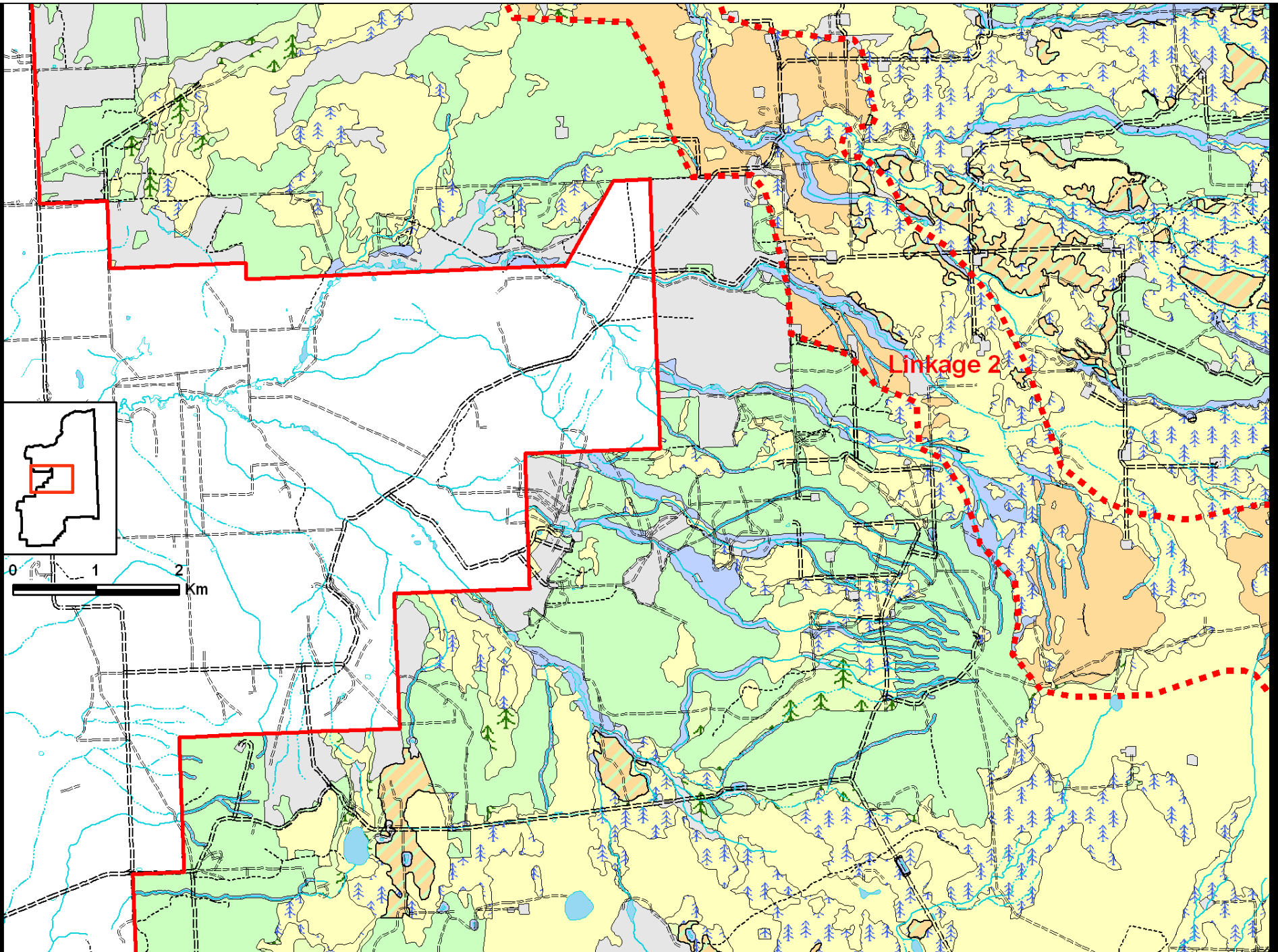
Ecosystem-based Forestry & Value-added Wood Products

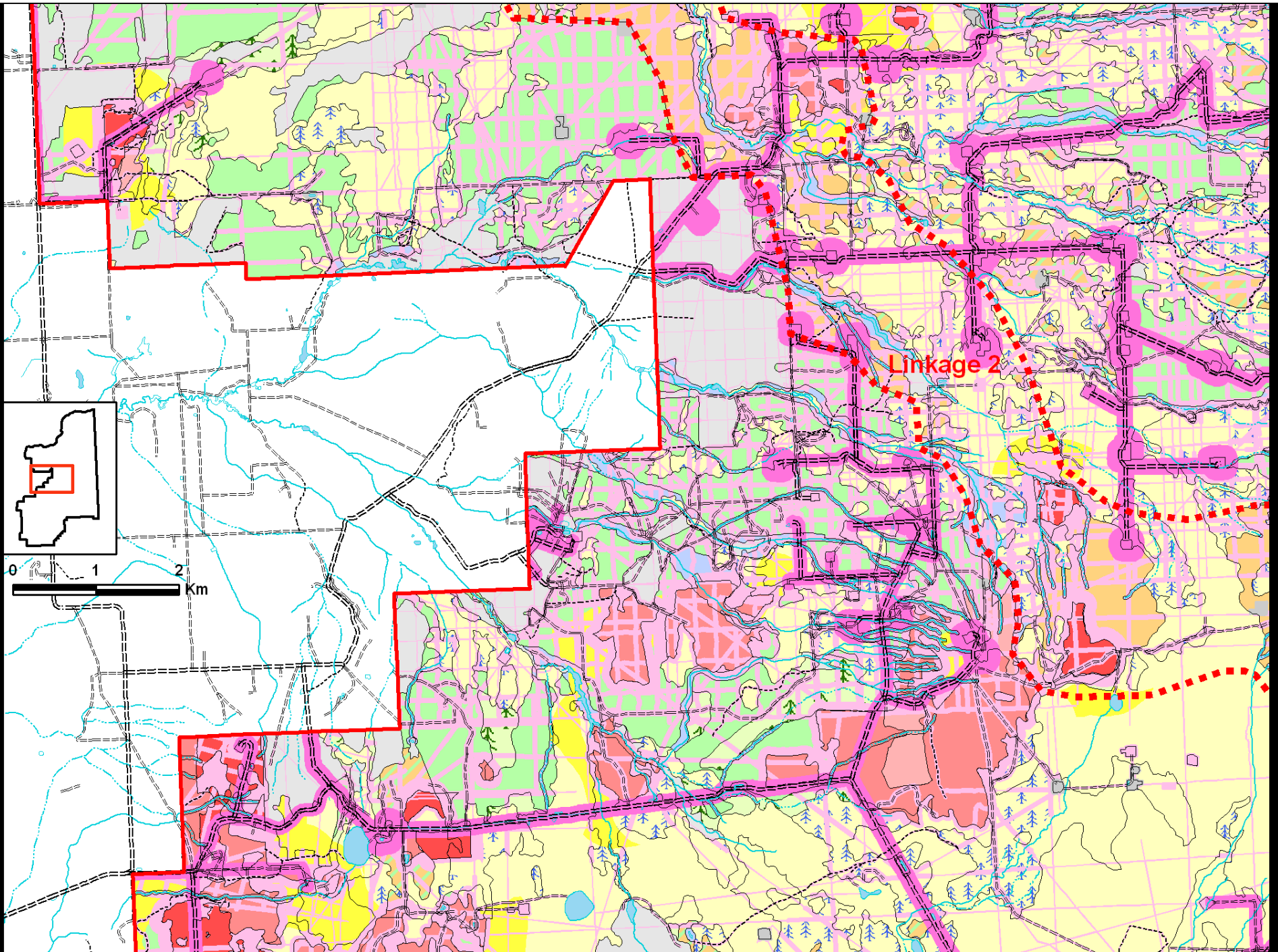
- Require at least *secondary manufacturing* in local community for timber cut near community
- Implement a *log & commodity lumber transportation tax* for minimally processed wood shipped outside local area
- Increase *timber volume controlled by Community Forest Agreements* to at least 50% of annual cut, and require *CFAs operate under EBCPs* with direct *community decision-making*
- Provide *stumpage credits* for “*light touch*” partial cutting—maintains ecological integrity/mitigates global warming

Identities to be respected.....



not objects to be dominated







Good Jobs need ecosystem-centred values

Share Ecological & Monetary Wealth



I'm not deploying my parachute until scientists get more certain about this gravity stuff.

